

# U.S. Healthcare: What's Broken & How to Fix It



## Healthcare Innovation 2013 Symposia Series

### Featured Speakers and Panel Topics

February 19, 2013

**Robert S. Dittus, MD, MPH**  
Associate Vice-Chancellor for Public Health  
Vanderbilt University Medical Center  
*New Paradigms of Health Services Research*

September 17, 2013

**Catherine L. Gilliss, PhD, RN, FAAN**  
Dean  
Duke University School of Nursing  
*Best Practices Supporting Interdisciplinary  
Innovation in Academic Health Centers*

October 9, 2013

**Student Perspectives Symposium**  
Students and faculty from health-related fields  
at local ACTSI institutions  
*U.S. Healthcare: What's Broken & How to Fix it*

October 29, 2013

**Mark Keroack, MD, MPH**  
Chief Physician Executive & President  
Baystate Medical Practices  
*Quality and Intergrated Systems of Care*

December 3, 2013

**Leonard A. Schlesinger, DBA, MBA**  
President  
Babson College  
*Entrepreneurship in Driving Healthcare Innovation*

A series of quarterly symposia sponsored by the Emory-Georgia Tech Healthcare Innovation Program (HIP) and the Atlanta Clinical & Translational Science Institute (ACTSI). The symposia are free to attend and open to all faculty, staff and students.

Visit [www.hip.emory.edu](http://www.hip.emory.edu) for more information



**EMORY**  
UNIVERSITY



**Healthcare  
Innovation Program**



# Healthcare Innovation Symposium VII US Healthcare: What's Broken and How to Fix It?

## THE STUDENT PERSPECTIVE



4:30-6:30 PM  
October 9<sup>th</sup>, 2013  
Emory University



**EMORY**  
UNIVERSITY



**Healthcare  
Innovation Program**



Atlanta Clinical  
& Translational  
Science Institute

**U.S. HEALTHCARE: WHAT'S BROKEN AND HOW TO FIX IT**  
**Symposium VII: The Student Perspective**

Wednesday, October 9, 2013  
4:30-6:30 pm

CNR 1000, Rollins School of Public Health, Emory University

**4:30-4:40 pm Welcome, Introductions**

Fred Sanfilippo MD, PhD, Director, Emory-Georgia Tech Healthcare Innovation Program  
Mathu Kumarasamy, Research Assistant, Office of Quality & Risk, Emory Healthcare

**4:40 – 6:00 pm Student Presentations**

**The Interdisciplinary Nature of Healthcare**

Lindsay Allen, Rollins School of Public Health, Emory University  
Faculty Curator - Jason Hockenberry, Health Policy & Management, Emory University

**The US Healthcare System: A Dispersed Model**

Morgan Holmes, Emory College of Arts and Sciences  
Faculty Curator - Tracy Scott, Department of Sociology, Emory University

**Medical Education System**

Kristine Vanijcharoenkarn, Emory University School of Medicine  
Faculty Curator - Maura George, Emory CAS

**Nursing Scope of Practice**

Mary Micikas, Nell Hodgson Woodruff School of Nursing, Emory University  
Faculty Curator - Linda McCauley, Dean Nell Hodgson Woodruff School of Nursing

**The Evolving Role of Allied Health**

Meredith Brazell, Emory University Physician Assistant Program  
Faculty Curator – Allan Platt, Academic Coordinator, Physician Assistant Program

**Medicare Star Ratings**

Leena Murthy, Goizueta Business School & Rollins School of Public Health, Emory University  
Faculty Curator – Steven Culler, Health Policy & Management, Emory University

**Research & Development Costs**

Vineet Tiruvadi, Emory-Georgia Tech MD/PhD Program  
Faculty Curator – Robert Nerem, Bioengineering and Bioscience, Georgia Tech

**6:00 – 6:30 pm Q&A; Essay Contest Winners; Closing Remarks**

**6:30 – 8:30 pm Student Networking Night (students only)**



**SAVE THE DATE**  
**HEALTHCARE INNOVATION SYMPOSIUM VIII**  
**QUALITY AND INTEGRATED SYSTEMS OF CARE**

**Mark A. Keroack**  
Executive Vice President  
Chief Operating Officer  
Baystate Health



**Tuesday, October 29, 2013**  
4:30 to 6:30 pm  
Emory University Hospital Auditorium  
Reception to Follow



**EMORY**  
UNIVERSITY



**Healthcare  
Innovation Program**



Atlanta Clinical  
& Translational  
Science Institute





## Investigator-Initiated Seed Grants in Healthcare Innovation

The Emory-Georgia Tech Healthcare Innovation Program (HIP), in partnership with the Atlanta Clinical & Translational Science Institute (ACTSI), and Georgia State University (GSU) are pleased to announce the fifth round of research seed grants in Healthcare Innovation. Seed grants will fund multi-investigator, multi-disciplinary teams examining healthcare services and clinical effectiveness. Awards will support innovative approaches that address issues of healthcare quality, costs, and/or access that are consistent with the goals of the HIP.

Two types of seed grants will be offered: Preliminary Study Grants or Complete Project Grants. For information regarding evaluation criteria, funding, proposal formats, and submission instructions visit [www.hip.emory.edu](http://www.hip.emory.edu).

### DEADLINES

Letters of Intent due November 1, 2013  
Proposals due November 15, 2013



Healthcare Innovation Program



Atlanta Clinical & Translational Science Institute



**PUBLIC HEALTH**  
Lindsay Allen, MA  
Doctoral Student, Health Economics & Research  
Rollins School of Public Health, Emory University

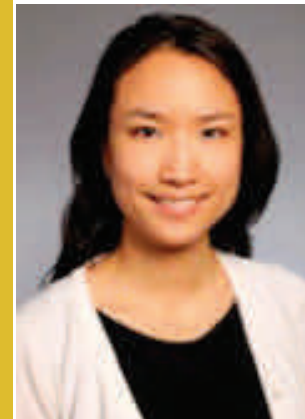
Lindsay Allen, MA, is a second-year doctoral student in health economics and health services research at Emory's Rollins School of Public Health. She earned her bachelor's degree in Cognitive Science from the Johns Hopkins University, and her master's degree in Health Administration and Policy from the University of Chicago. She spent several years working in the pharmaceutical industry before transitioning to the non-profit sector, where she worked as a senior healthcare technology analyst at ECRI Institute. She currently serves as President of Emory's AcademyHealth Student Chapter, and as Vice President of Emory's Association of Doctoral Students in Health Economics and Policy. For her service to Emory and the local community, she received Emory's Emerging Leader Award in 2012. Her primary research interests center on hospital emergency department utilization.

**FACULTY CURRATOR**—Jason Hockenberry, PhD, Assistant Professor of Health Policy & Management, Rollins School of Public Health, Emory University



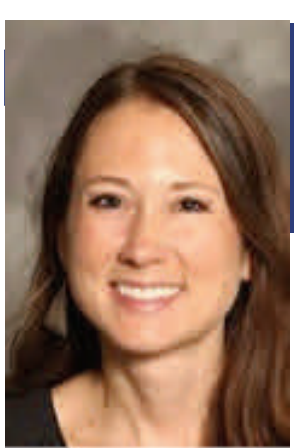
**PRE-HEALTH**  
Morgan Holmes  
Emory College of Arts and Sciences

Morgan is a senior in Emory College of Arts and Sciences double majoring in biology and Economics. She has studied healthcare systems from an economics and sociological perspective during her undergraduate career. Morgan spent the summer abroad, studying the U.S. Healthcare System in comparison to the National Health Service in London, England. She has also interned with Emory Healthcare's Clinically Integrated Network. When not pursuing healthcare endeavors, Morgan enjoys working with underrepresented populations in the Office of Undergraduate Admission. **FACULTY CURRATOR**—Tracy L. Scott, PhD, Director of Undergraduate Studies and Senior Lecturer, Department of Sociology, Emory University.



**MEDICINE**  
Kristine Vanijcharoenkarn  
Emory University School of Medicine

Kristine Vanijcharoenkarn is a native of Atlanta and a 4th-year medical student at Emory School of Medicine. She graduated from Yale University with a B.A. in Political Science and Biology. During her time in college, Kristine was very involved in free clinic work for underserved populations, interning at Haven Free Clinic in New Haven and the Fairhaven Community Health Center. In addition, she served as director of a Hemophilia non-profit and was editor of the undergraduate Public Health magazine. After graduation, Kristine spent a year in Beijing, China on a scholarship from the Chinese government studying Chinese before starting at Emory in 2010. Kristine's interests include quality improvement and helping create a sustainable, patient-centered model of healthcare. **FACULTY CURRATOR**—Maura George MD, Assistant Professor, General Medicine and Geriatrics, Emory University School of Medicine



### NURSING

Mary Micikas

Emergency Nurse Practitioner Student and Fuld Fellow  
Nell Hodgson Woodruff School of Nursing, Emory University

Mary Micikas is a first year MSN, Emergency Nurse Practitioner student and Fuld Fellow in the Nell Hodgson Woodruff School of Nursing at Emory University. She has a previous bachelor's degree in English and Secondary Education from the University of Colorado and completed the BSN program for second degree students from Emory University in 2013.

Before returning to nursing school, Mary worked with a small non-profit in rural Guatemala, where she worked with the community to start up a small primary care and dental clinic and later served as the clinic director and health education coordinator. At Emory Mary has led several Global Health Institute teams to conduct research projects in Guatemala, served as the president for Emory International Student Nurses' Association, provided medical interpretation for patients through Emory Volunteer Medical Interpreter Services (VMIS), and worked on a task force to start a CDC student nursing organization.

**FACULTY CURRATOR**—Linda McCauley, Dean, Nell Hodgson Woodruff School of Nursing, Emory University



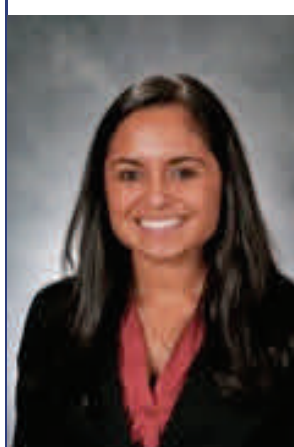
### ALLIED HEALTH

Meredith Brazell

Physician Assistant Program, Emory University

Meredith Brazell is a senior in the Emory University Physician Assistant Program and represents her class as the coordinator for the student-run clinic at the Good Samaritan Health Center. She received her Bachelor's of Science in Business Management and Spanish from the Georgia Institute of Technology. She worked as a medical and research assistant for four years before starting the PA program. Meredith's most memorable aspect of the Emory PA Program has been volunteering at the South Georgia Farmworker Project. She

enjoys working with the medically underserved Spanish speaking community and will be graduating in December. **FACULTY CURRATOR** — Allan Platt, PA-C, MMSc, Academic Coordinator—Interim Admissions Director, Physician Assistant Program, Emory University School of Medicine



### BUSINESS

Leena Murthy

MBA/MPH Candidate

Goizueta Business School & Rollins School of Public Health, Emory University

Leena Murthy is a dual MBA/MPH candidate at Goizueta Business School and Rollins School of Public Health. She serves as the President of the Goizueta Healthcare Association (GHA) and VP of Admissions & Recruiting for Goizueta Women in Business (GWIB). Leena attended the University of South Carolina for her undergraduate degree, and earned a double major in Finance and International Business. Following her undergraduate degree, Leena worked at Triage Consulting Group, a hospital revenue cycle consulting firm. Leena is now a 2nd year student at Emory University, concentrating in health policy & operations. **FACULTY CURRATOR**—Steven Culler, PhD, Associate Professor, Goizueta Business School and Rollins School of Public Health, Emory University



### ENGINEERING

Vineet Tiruvadi

Biomedical Engineering, Emory-Georgia Tech MD/PhD Program

Vineet Tiruvadi is a 3rd year in the Emory+GeorgiaTech MD/PhD program and represents the Biomedical Engineering PhD program. He received his Bachelor's of Science in Biomedical Engineering at Texas A&M University and completed his Master's of Science in Bioengineering as an NDSEG Fellow at the University of Pennsylvania in 2011. His current research focuses on engineering next-generation devices for neurological and psychiatric disorders with an eye towards guiding the clinical and ethical frameworks of "cognitive" use. Besides research,

Vineet enjoys observing and volunteering as a student-physician at clinics for the under-insured, both in Atlanta as well as in developing countries. He has just started his Ph.D. work and looks forward to becoming more involved in the Atlanta healthcare and engineering communities. **FACULTY CURRATOR**—Robert Nerem PhD, Parker H. Petit Distinguished Chair for Engineering in Medicine, Institute Professor Emeritus, and Founding Director of the Parker H. Petit Institute for Bioengineering and Bioscience (IBB)



### MODERATOR

Mathu Kumarasamy

Research Assistant, Office of Quality & Risk, Emory Healthcare

Mathu Kumarasamy is a research assistant in the Office of Quality & Risk at Emory Healthcare. He recently received his Bachelor's of Science in Neuroscience and Economics from Emory University. Currently, Mathu's work consists of quality improvement projects involving hospital readmission and care coordination initiatives at Emory Healthcare. His current interests lie in the crossroads of big data and medicine. He is particularly

interested in leveraging data analytics and behavioral incentives to help establish a culture of evidence-based, preventive medicine in the United States. **FACULTY CURRATOR**—Fred Sanfilippo, Director, Emory-Georgia Tech Healthcare Innovation Program

### SPECIAL THANKS TO ALL OF THE SYMPOSIUM PARTICIPANTS, FACULTY CURATORS AND

Committee Members	Institutions
Mathu Kumarasamy	Emory Healthcare
Lindsay Allen	Emory School of Public Health
Kristen Christensen	Emory School of Nursing
Wendy Hermes	Georgia State School of Nursing
Dave Matthews	Emory School of Medicine
Leena Murthy	Emory Business School
Kimberlee Rogers	Emory School of Medicine
Inthu Somasuntharam	Georgia Tech Biomedical Engineering
Jyll Walsh	Georgia State School of Public Health